



PROSPECTUS

2025-2026

#PROUDTOBEPRI MET

www.colneprimet.co.uk



Welcome

Hello and a very warm welcome from Colne Primet Academy.

Our aim here at Colne Primet Academy is to give each and every child the very best educational start in life. We ensure that every student knows that they can do anything that they set their hearts on. At all times, we guide, support and inspire. We aim to provide exceptional teaching and learning and enriching extracurricular experiences to ignite ambition and ensure levels of individual achievement are high.

Students will often hear us talk about the ‘Primet Push’ – our drive to support every student in exceeding their potential with us. We embrace the differences of every child and enable them to use their talents, personalities and heritage to enhance their education. Our students are part of our family, a family of whom we are proud and protective. We have the very highest expectations and aspirations for our students, and always ensure that they have the support to achieve their goals.

We are very proud of what Colne Primet Academy stands for in its community. As part of Pendle Education Trust and with help and guidance from the ‘Outstanding’ Nelson and Colne College, the future of our academy is bright. We hope that you find all the information you need in this prospectus, but please don’t hesitate to get in touch if you do have any questions.



Lynne Blomley
Director of Education



Julia Pilkington
Principal



Why choose us?

We have a strong set of academy values which are followed by both staff and students. By striving for these values, we are all 'proud to be Primet' – something you will hear being said and celebrated a lot around the school.

- A varied and stimulating curriculum
- A career focused approach to learning, with strong partnerships in place with local businesses and community groups
- A commitment to quality teaching and learning
- Inspirational educational visits and trips
- Leadership, teaching and learning that was rated Good by Ofsted in May 2018 and highlighted by the Academy being named Secondary School of the Year in the East Lancashire Education Awards
- A broad and inclusive programme of enrichment
- A caring and supportive environment where we value individuality
- A strong focus on health and wellbeing
- Investment in facilities, throughout the Academy
- Strong Academy values for staff and students to follow - Progressing, Respectful, Inclusive, Motivated, Expressive and Together

Applying to Colne Primet Academy



Visit us

We will be holding an open event on Thursday 25th September 2025. To register your interest in this event, please book your free tickets on our website, and follow us on social media to be kept up-to-date.



Apply

Applications for secondary school places open in the September before your child is due to start secondary school and run to the deadline of October 31st of that year. To apply, you need to visit the Lancashire County Council website: Lancashire.gov.uk. You will find out if you have been successful in securing a place in March of the year your child is due to start secondary school.



Stay in touch

In the meantime, you can keep up-to-date with activities at the school by following our Facebook and Instagram pages and regularly visiting our website.

If you have any queries, do not hesitate to contact us by calling 01282 863970 or emailing enquiries@colneprimet.co.uk



Teaching and Learning

We proudly offer a challenging academic and creative curriculum which pushes students to achieve their best. We are dedicated to providing a high quality, personalised learning experience for all our students. We recognise that all students have different strengths, aptitudes, interests, areas for development and preferred ways of learning. Our curriculum caters for all, providing opportunities for students to show off their talents, experience success and achieve in all areas of learning. All our students follow the National Curriculum and study a range of subjects. Both academic knowledge and practical experience are key priorities. English, Maths and Computing proficiency underpins the delivery of our curriculum and through our broad and challenging range of subjects; we also develop and nurture social, moral and cultural interests. Towards the end of Year 9 students are supported in making decisions about their GCSE pathways. This enables them to develop a more specialised programme of study; tailored to their individual interests, career aims and aspirations.

Challenging and Inspiring

All our students are given plenty of opportunity to be stretched and challenged to ensure they reach or exceed their potential. This includes studying Further Maths, triple Science and the full suite of subjects for the English Baccalaureate qualification. Students also have the opportunity to become part of our Boat Race programme – a unique training programme set up by Nelson and Colne College, to develop students over three years to help them prepare for college, progress to top universities in the country and, ultimately, reach their career aspirations.



Our Key Stage 4 Curriculum

GCSEs and vocational qualifications Years 10 and 11

Throughout their GCSE studies, which begin in Year 10, all students continue to follow a broad and balanced curriculum. This comprises of the core subjects English, Maths, Science, RCS (PSHE) and PE which are complemented by a personal pathway of options, catering for all interests and abilities and providing students with new and exciting learning opportunities. The options available are currently Art, Business Studies, Computing, Drama, French, Spanish, Geography, History, Religious Education, Child Development, Creative iMedia, Hospitality and Catering, PE and Engineering. We also offer Separate Sciences and Further Maths – for students who excel in Science or Mathematics, as a strong foundation for A Levels and university.

Pride in Learning

We are proud to have a team of staff who are 100% dedicated to our students, providing vast amounts of experience, enthusiasm and new ideas to continually improve our school. Lessons are lively and engaging and we work hard to make sure that each child is given the chance to shine. We value each student's individual achievements, which builds their confidence and encourages a love of learning which we hope will stay with them for a lifetime. Students are formally assessed throughout the year on our attitudes to learning scale. Part of student success is due to developing skills, values, and work ethic.



“Whenever my son has needed help or support, everyone at Primet has gone above and beyond and we are extremely grateful for that.
Year 7 parent



Career Driven

The curriculum in our school leads students to secure, sustainable and valuable lifelong professions. Our students enjoy academic experiences which enable them to understand the impact of learning and how their efforts and hard work will be reflected in their future. We encourage our students to think about their career aspirations and understand the benefits of planning early in order to guarantee the best possible success. With strong links to local employers and a focus on careers, we ensure that our students' ambitions are linked to careers which they will find both fulfilling, profitable and rewarding. Employer involvement in our curriculum adds that 'extra' value to our students' educational experience. Students benefit from trips, visits and mentoring, in addition to enterprise projects, work experience and employability skills.

Those students wishing to move straight into the world of work will be guided through the transition from school into employment and receive help with CV writing and interview techniques; while those aiming at further education and even university study will gain the skills and qualifications needed to progress; plus an understanding of the world of employment and how to successfully secure the next step.

As part of our commitment to preparing our students for the world of work, all students in Year 10, complete their Employability Award. To achieve this award, students must have excellent attendance and punctuality throughout their time at the school, complete two week work experience with good reports from their employer, have a CV and have successfully had a mock interview with a local employer. Students can achieve Bronze, Silver and Gold awards.



Reading Focus

Reading is a core element of our school and we encourage all of our students to read as often as possible. We believe that reading for pleasure can change lives! In school, we use the Accelerated Reader programme. This programme helps us to ascertain the reading ages of each student and helps our students to select books which will help them to progress as readers. All of our students will receive a 'Reading Journal' during their first Accelerated Reader lesson which takes place in our library (we call this The Oracle). The journal helps students to keep a record of what they are reading and also allows direct contact between home and school about the progress being made with reading.

We encourage parents to read at home with their children as regularly as possible. This is something that often stops after Primary School, but it shouldn't! We want our students to be heard reading on a regular basis and we will strive to listen to them read at least once each week in school.

At the start of the academic year, you will receive a letter about 'The Importance of Reading and our Whole-school Approach'. This guidance discusses the key research behind the value of reading and highlights our approach to reading. Alongside this, we give every Year 7 student a 'Reading Together' bookmark which helps parents to support their child's reading at home. It gives them advice with regards to the type of questions that need to be asked and how to develop the conversations about reading.



“ I am so glad I chose Primet for my daughter. The staff have been amazing and can't do enough to help. **Year 7 parent** ”



Life at the Academy

We are proud of the positive atmosphere that exists within the Academy. Visitors very often comment on the calm and orderly surroundings and the warm, welcoming and friendly ethos we have created. We believe that high achievement comes as a result of a positive atmosphere, high expectations and mutual respect.

Primet Positives

We are 'Proud to be PRIMET'. This represents our core values and the characteristics we develop in our students to help them be successful. Our core values are:



Mental Wellbeing and Inspires Mentors



We are one of only two secondary schools in Pendle to benefit from the services from Burnley FC in the Community mentors schemes. We are fortunate to have two Mental Wellbeing Mentors, who encourage young people to talk about their mental health and open up the conversation in everyday life. We also have two Inspires Mentors who support students with focusing on developing positive aspirations, self-confidence and key skills like teamwork and leadership.

Life at the Academy

Becoming a Student Ambassador

Students will be given chances to represent the Academy throughout their time with us – helping them to develop their confidence skills and giving them opportunities to develop their CV and make them stand out in their applications to college, an apprenticeship, or a job. This includes becoming sports captains or prefects, helping at open events, being selected for key media opportunities, and more!

Extra Curricular Activity

All students are encouraged to take part in the wide variety of activities at Colne Primet Academy.

We encourage not just academic development but personal growth through structured sessions at lunchtime and after school.

Opportunities range from sports clubs and fixtures, and the challenging Duke of Edinburgh Awards, to our popular gardening club, our students have countless opportunities to take part and excel.



Community Involvement

At Colne Primet Academy we see ourselves as a learning community at the heart of the wider community and as such we encourage our students to be active citizens in their local community.

Building Bridges

All our students in Years 7 and 9 experience working on a 'building bridges' programme that explores the important issues around identity, culture and community and provides them with the opportunity to work as a team on a potentially winning community project. If selected as the winning project it is funded by the Building Bridges programme to run as an actual event with our students leading with their own design. Recently, Colne Primet Academy students won with a project designed to celebrate different cultures by bringing together people from different faiths and backgrounds to celebrate their traditional foods. This was a huge success and well received by the local community.

Duke of Edinburgh

Being the only Pendle secondary school operating as a licensed centre for the Duke of Edinburgh Award, we place great importance on encouraging our students to have a go and take part in this established and highly respected national award scheme.

We offer our students the opportunity to complete both Bronze and Silver awards with us. Students complete key elements including volunteering in their local community, taking on a new physical activity and learning a new skill as well as being successful in the expeditions.



Burnley Football Club



As a key asset in our local community our partnership work with BFC is a real strength for our students. With regular visits to Turf Moor and use of their teaching suites, we currently run two education we have our Education and Enterprise Programme and our Interventions Programme, with excellent access to educational facilities and sporting experts.

Local Charities

Students work hard to raise funds to support local charities such as Open Door, Pendle Hospice and Petal Cancer Fund.

Where are they now?



YEAR 11 LEAVERS 2025

Aisha Asad

Where are you moving on to?
A Levels in English Language, English Literature, History and Classics at Clitheroe Royal Grammar School Sixth Form

What are your future ambitions?
To pursue a career as an author

Favourite memory from Primet?
Helping to organise Primet's first Culture Day



Pendle
Education Trust



YEAR 11 LEAVERS 2025

Wahab Hussain

Where are you moving on to?

A Levels in Computer Science, Maths and Business Studies at Nelson and Colne College

What are your future ambitions?
To pursue a Computer Science related career

Favourite memory from Primet?
Making a wide range of friends



Pendle
Education Trust



YEAR 11 LEAVERS 2025

Callum
St. John-Claire

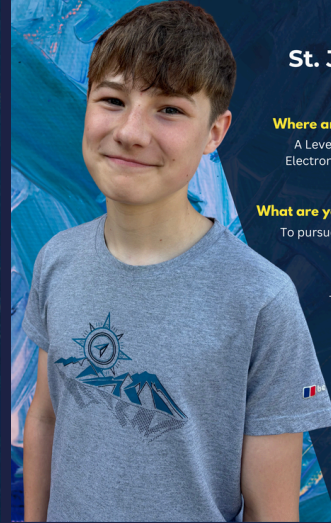
Where are you moving on to?
A Levels in Maths, Physics and Electronics at Nelson and Colne College

What are your future ambitions?
To pursue a career in Engineering

Favourite memory from Primet?
The range of school trips



Pendle
Education Trust



YEAR 11 LEAVERS 2025

Annabelle Radcliffe

Where are you moving on to?
A BTEC in Art and Design at Nelson and Colne College

What are your future ambitions?
To take a gap year to travel to Europe

Favourite memory from Primet?
Being part of the school sports teams, especially netball



Pendle
Education Trust



YEAR 11 LEAVERS 2025

Chloe Cooper

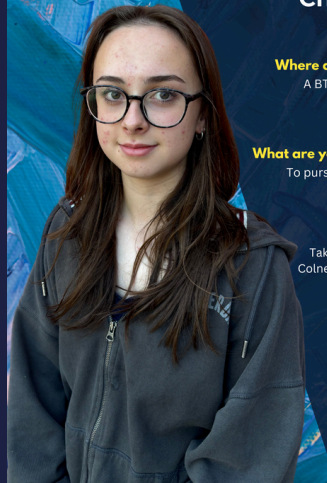
Where are you moving on to?
A BTEC in Forensic Science at Burnley College

What are your future ambitions?
To pursue a career as a Forensic Scientist

Favourite memory from Primet?
Taking part in the Nelson and Colne College Boat Race trip to the University of Oxford



Pendle
Education Trust



YEAR 11 LEAVERS 2025

Jamie Smith

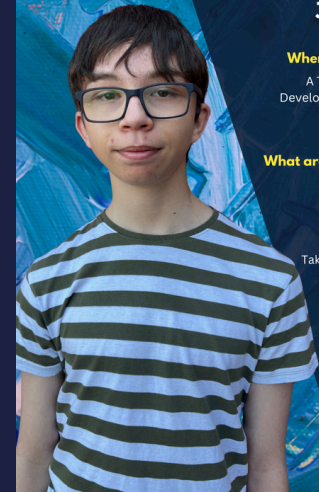
Where are you moving on to?
A T Level in Digital Production, Development and Design at Nelson and Colne College

What are your future ambitions?
To pursue a career as a Pilot

Favourite memory from Primet?
Taking part in school sports days



Pendle
Education Trust





Pendle
Education Trust



**Colne Primet Academy is proud to be
part of the Pendle Education Trust
family**

Pendle Education Trust is a family of schools in Lancashire. Our Trust is sponsored by the 'Outstanding' Nelson and Colne College. Established in 2013 Pendle Education Trust continues to grow, welcoming new schools to the family.

We believe every child should only be a short walk away from a world class school.

Through close collaboration with our children, parents, staff and local partners we strive to deliver an excellent education for children in Pendle and the surrounding districts.

Please visit our website for more information:
www.pendleeducationtrust.co.uk



Colne Primet Academy

Dent Street, Colne, BB8 8JF

Tel: 01282 863 970

Email: enquiries@colneprimet.co.uk

www.colneprimet.co.uk



Pendle
Education Trust